



5/32-44 Tarkin Court BELL PARK VIC

WAREHOUSE WITH EXTENSIVE OFFICE FITOUT BELL PARK

- Excellent two-level office fitout with amenities
- High-clearance warehouse with electric roller door
- Excellent access to Princes Hwy and Geelong Ring Road
- On-site car parking and secure setting
- Zoned Industrial 1

This high-quality industrial warehouse in Bell Park's tightly held precinct offers a move-in-ready workspace ideal for a range of businesses.

Comprising approximately 280m2, it includes a two-level

[For full version visit the website](#)

- Type** : Industrial
- Price** : \$37,500PA plus GST and Outgoings
- Building Size** : 280 sqm
- Land Size** : 200 sqm
- View** : <https://www.geelongcommercial.com.au/lease/vic/geelong-district/bell-park/commercial/industrial/8546522>

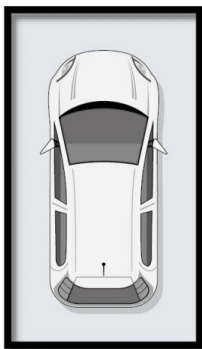
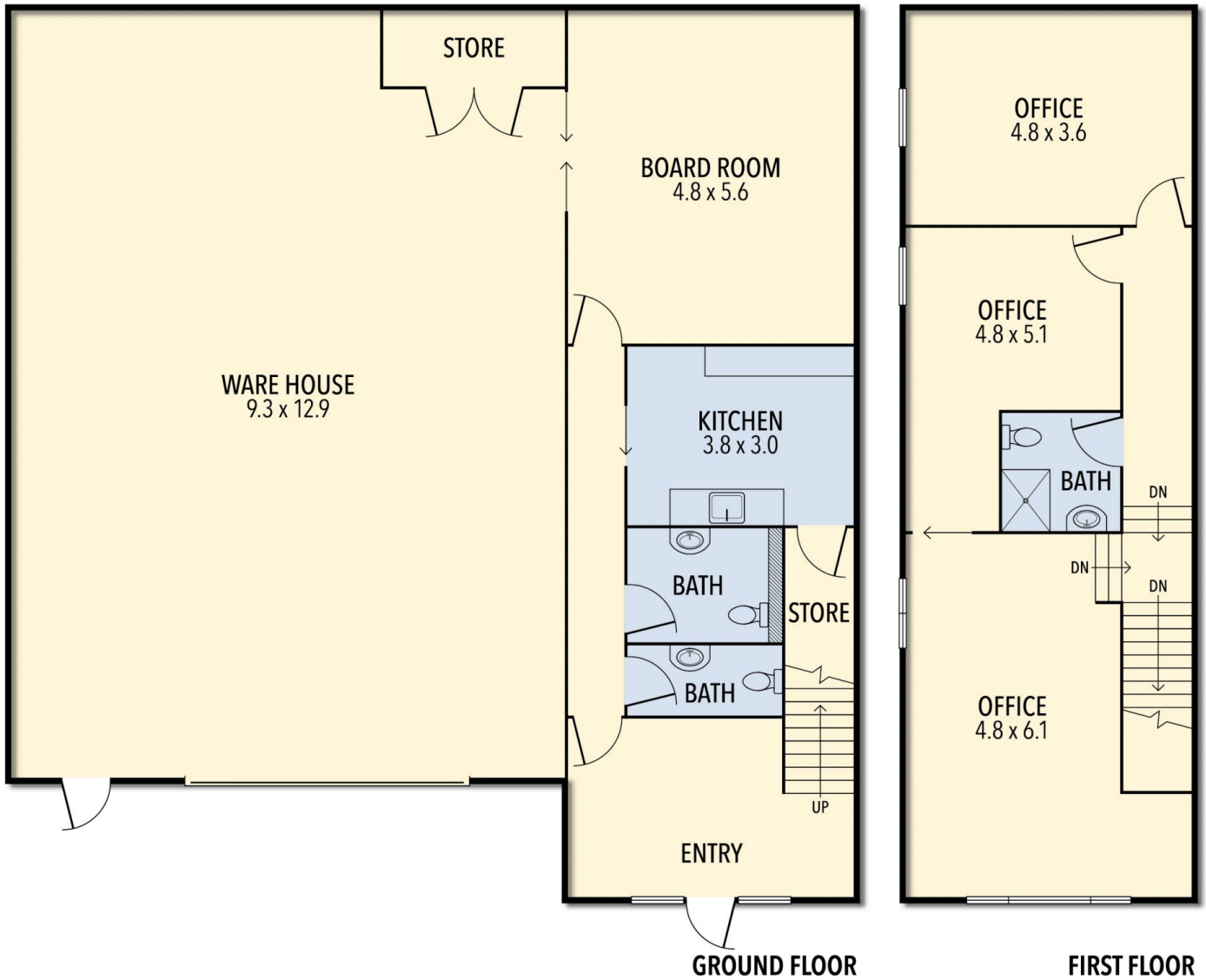


Neville Richards
03 5221 6488

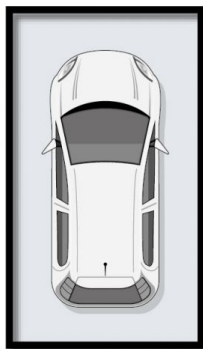


Oscar Fraatz
03 5221 6488

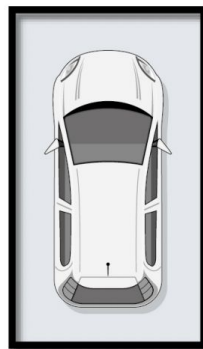
5/32-44 TARKIN COURT, BELL PARK



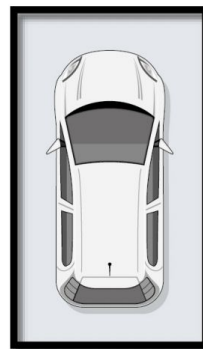
CARSPACE
(NOT IN POSITION)



CARSPACE
(NOT IN POSITION)



CARSPACE
(NOT IN POSITION)



CARSPACE
(NOT IN POSITION)



THE ABOVE PLAN IS AN ARTIST'S IMPRESSION ONLY, IT INCLUDES ELEMENTS THAT ARE FOR DISPLAY PURPOSES ONLY AND MAY NOT BE TO SCALE. LANDSCAPING SHOWN IS INDICATIVE ONLY. DIMENSIONS ARE APPROXIMATE.