

2/32-44 Tarkin Court BELL PARK VIC



Perfect Secure Investment in Bell Park
 355m2 approx. Industrial Warehouse incl. 85m2
 mezz-office
 Returning \$30,324.43PA plus GST and outgoings
 Excellent Opportunity, Secure Long Term Tenants
 Zoned Industrial 1

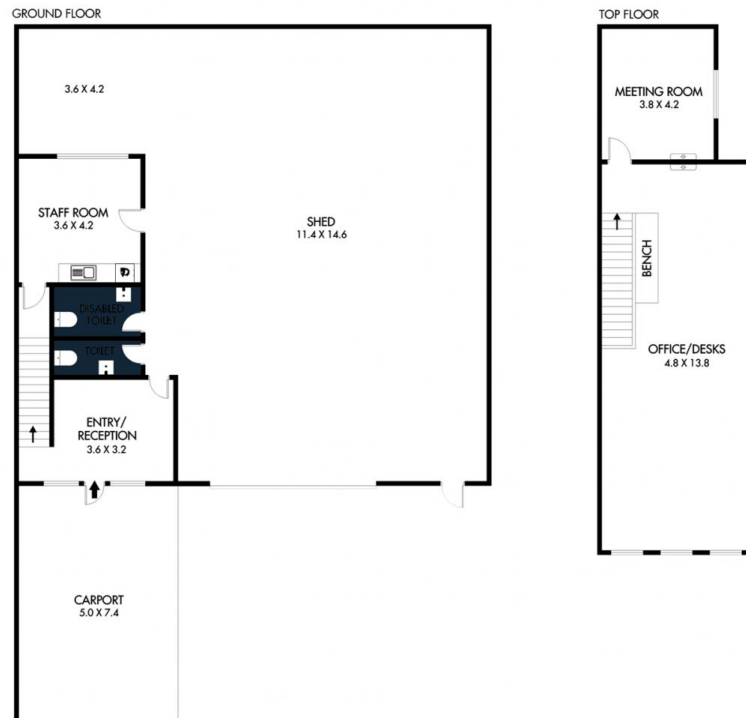
Type : Industrial
Building Size : 355 sqm
Land Size : 270 sqm
View : <https://www.geelongcommercial.com.au/sale/vic/geelong-district/bell-park/commercial/industrial/8548125>

This securely tenanted investment represents a great opportunity for investors in today's busy commercial market. The property is occupied by long-term corporate tenants and is fitted out with flexible two-story office, incl. reception, meeting room and open plan office. Positioned well at the front of the development in this popular industrial Bell Park cul-de-sac the property is perfect for SMSFs and investors

[For full version visit the website](#)



Neville Richards
 03 5221 6488



Disclaimer: Please note plans are indicative only and not drawn to exact scale. All dimensions & locations are approximate. Potential buyers should view the property in person.
Plan by CK Real Estate Photography - www.ckrealestatephotography.com.au